

International Europhysics Conference
on High Energy Physics

Aachen, 17 – 23 July 2003

Riccardo Brugnera

Padova University and INFN

on behalf of the
H1 and ZEUS collaboration

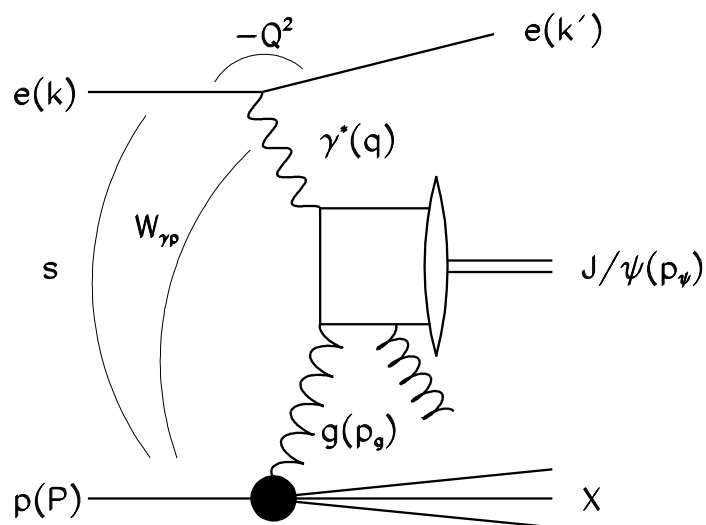


Inelastic J/ψ production at HERA

Outline

- ❖ Introduction
- ❖ J/ψ Production Mechanisms
- ❖ Inelastic J/ψ Photoproduction
- ❖ Inelastic J/ψ Electroproduction
- ❖ Polarisation Measurements
- ❖ Conclusions & Outlook

Introduction - I



kinematic variables:

$$Q^2 = -q^2 = -(k - k')^2$$

$$s = (P + k)^2$$

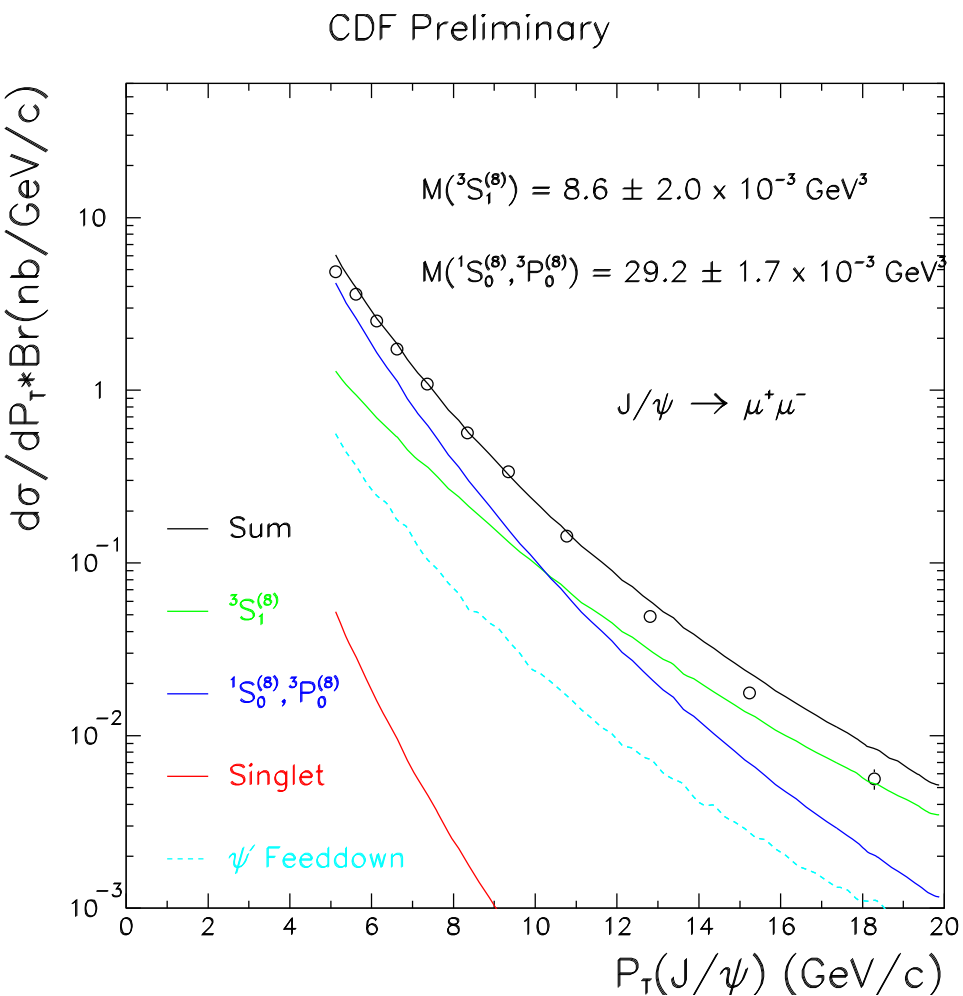
$$W_{\gamma p} = \sqrt{(P + q)^2}$$

$$z = p_\psi \cdot P / q \cdot P$$

$$= E_\psi^* / E_\gamma^* \text{ in proton rest frame}$$

- **photoproduction** ($Q^2 < 1 \text{ GeV}^2$):
scattered e not seen in the main detector
- **electroproduction** ($2 < Q^2 < 100 \text{ GeV}^2$):
scattered e detected in calorimeter
- **J/ψ detected through:**
 $\mu^+\mu^-$, e^+e^- decay modes

Introduction - II



How is the charmonium produced ?

Colour Singlet Model (CSM)

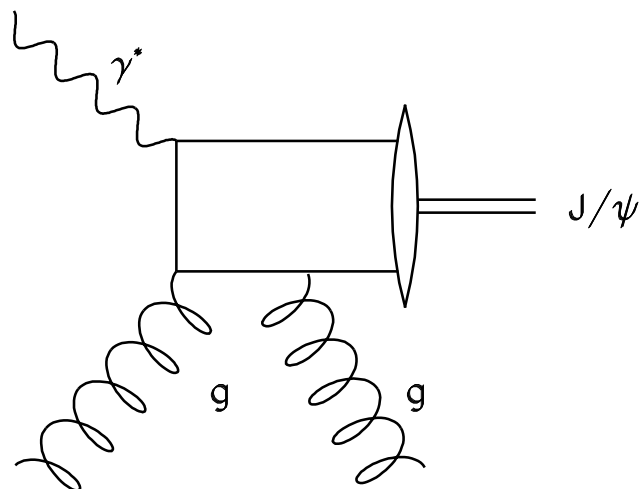
orders of magnitude too low



non-relativistic QCD (NRQCD)

Production Mechanisms – I

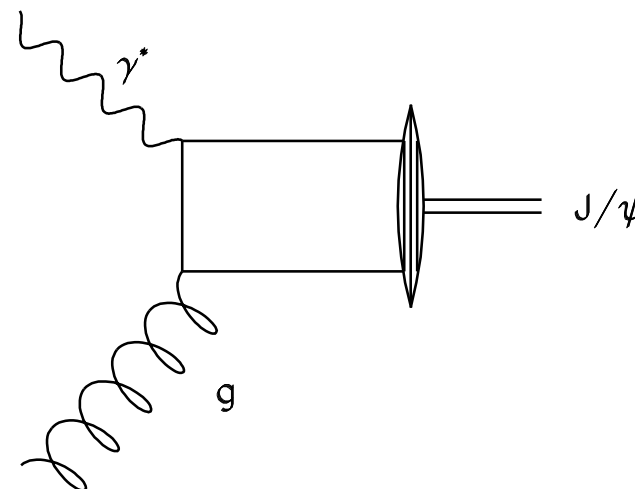
direct photon gluon fusion: $z \gtrsim 0.2$



Colour Singlet Model

$c\bar{c}$ must have J/ψ quantum numbers
one parameter fixed from $\Gamma_{\psi \rightarrow l+l^-}$

CSM



non-relativistic QCD

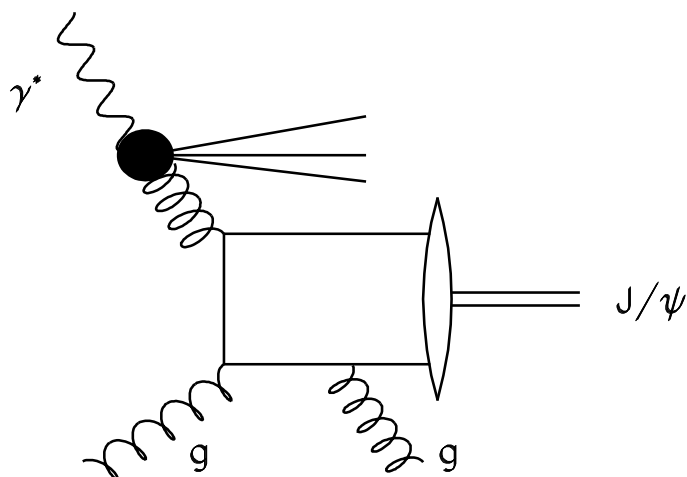
$c\bar{c}$ also in colour octet state
additional free parameters
long distance matrix elements “LDMEs”
LDMEs not calculable \rightarrow from experiment

CS + CO

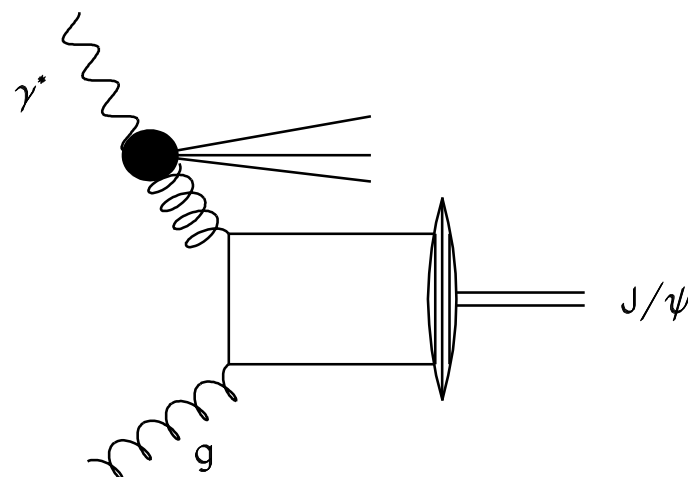
Production Mechanisms – II

resolved photon processes (gluon gluon fusion): $z \lesssim 0.2$

suppressed with increasing Q^2

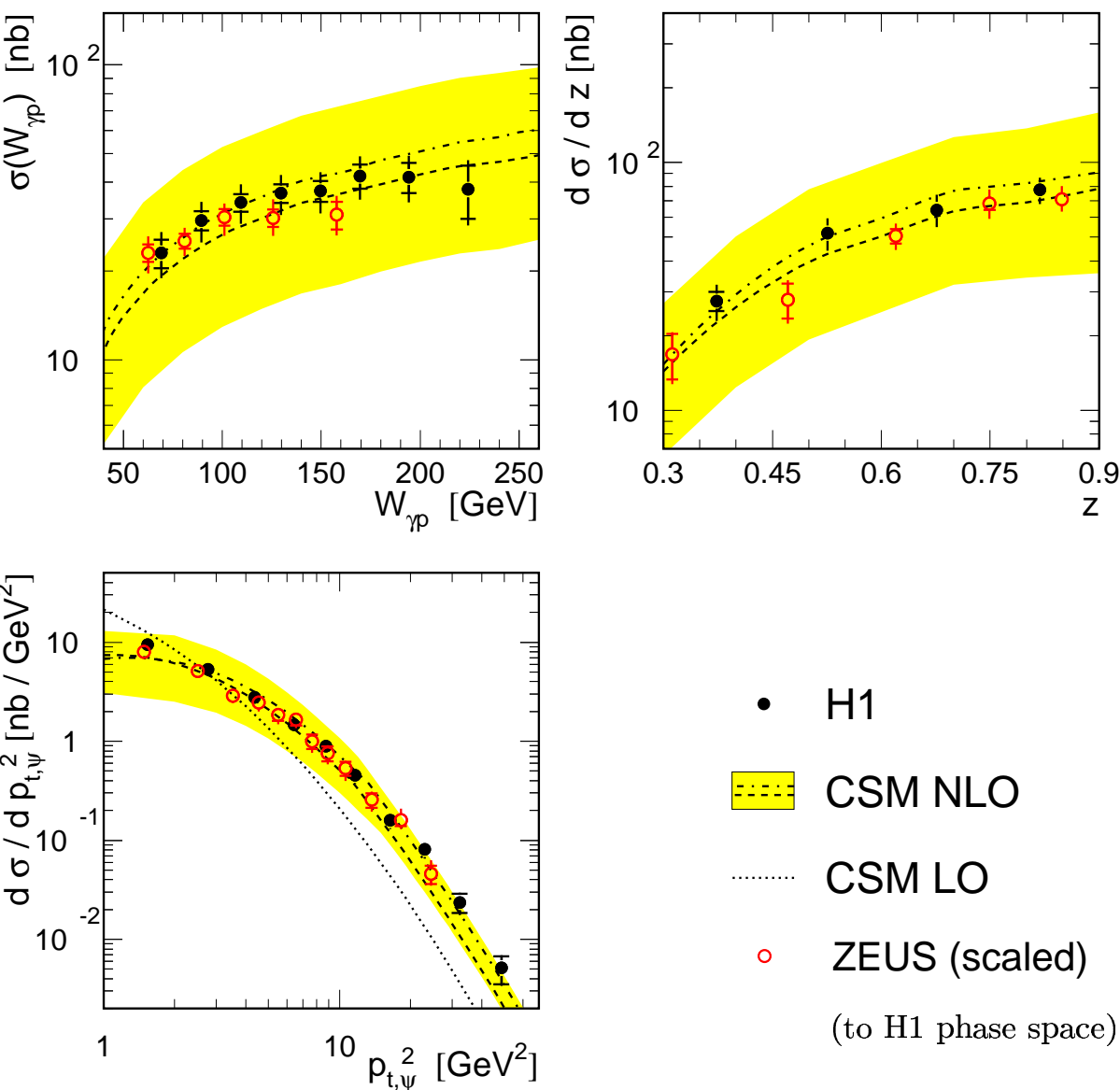


Colour Singlet Model



non-relativistic QCD

Photoproduction: Comparison with CSM NLO

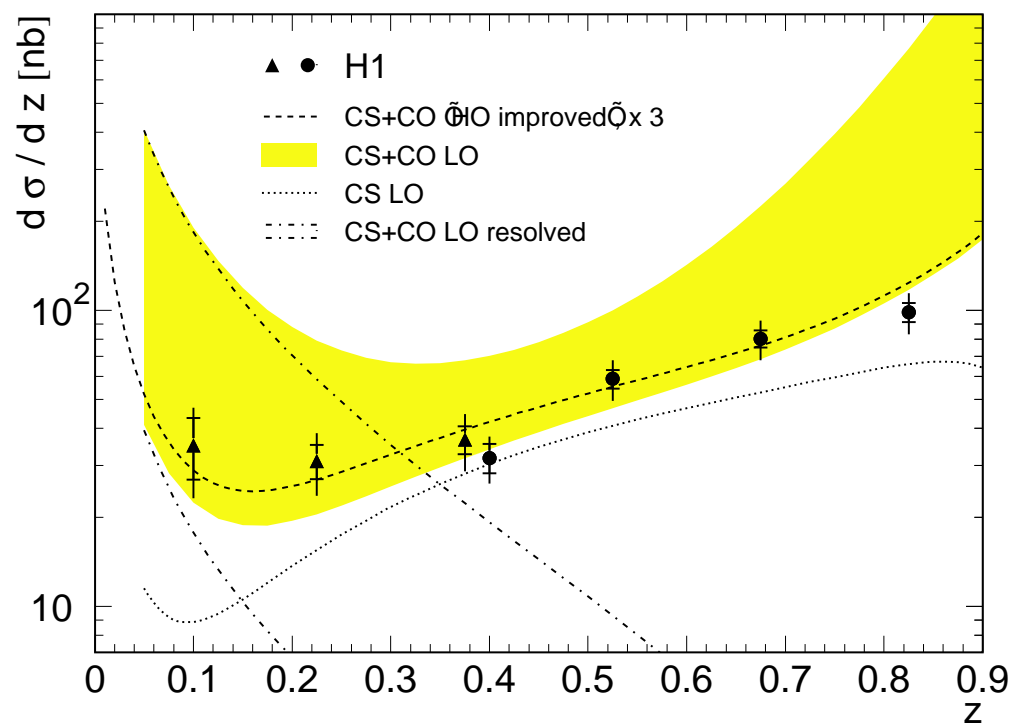


♣ Agreement between H1 and ZEUS data

♣ full NLO calculation of the direct γ gluon fusion in the CSM (M.Krämer)

♣ within the large theoretical uncertainties, the prediction is in agreement with the data, both in shape and normalization

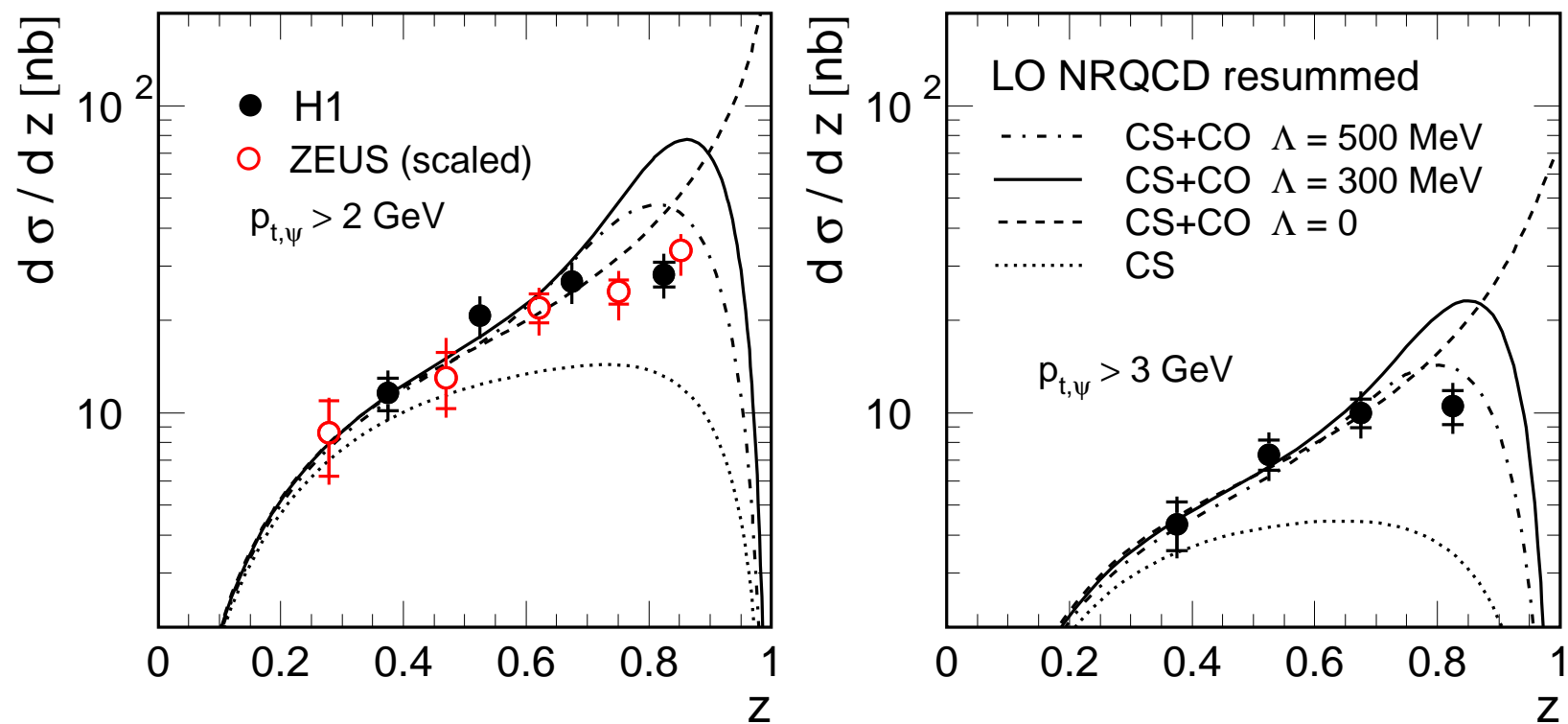
Photoproduction: Comparison with NRQCD (LO)



**The measurements explore
the low z region:
 $z = 0.05$ for H1, $z = 0.1$ for ZEUS**

- LO NRQCD calculation including direct and resolved photon processes (M. Krämer and M. Cacciari) give a fair description of whole z range with small LDMEs
- large uncertainties in calculation due to LDMEs extracted from CDF data
- large values of LDMEs are excluded here

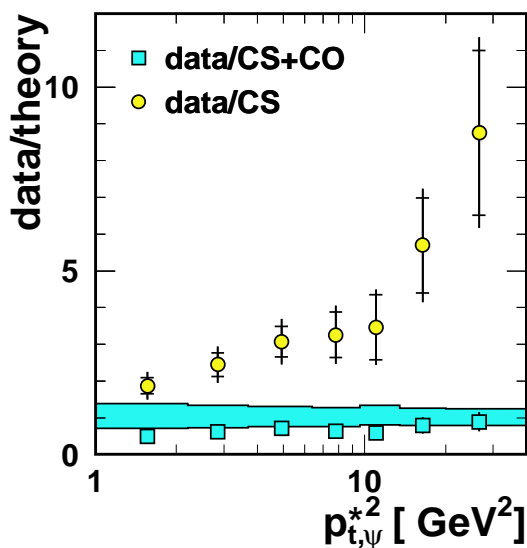
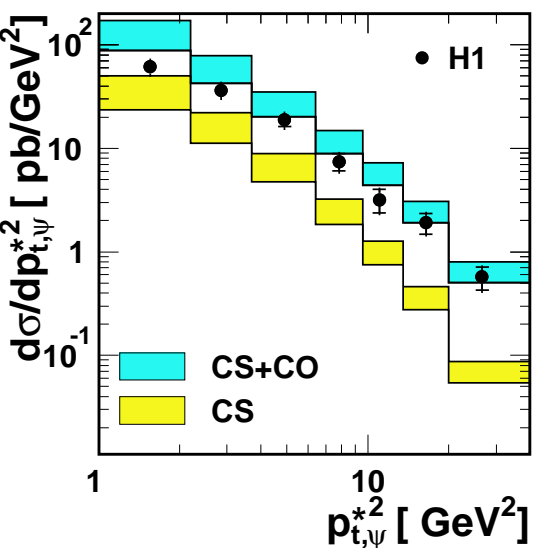
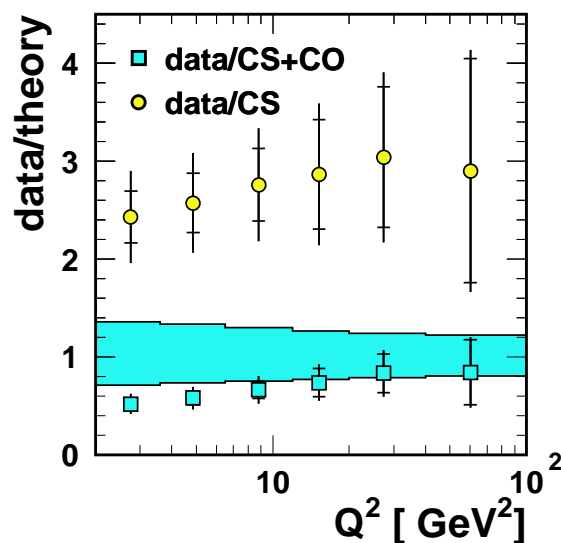
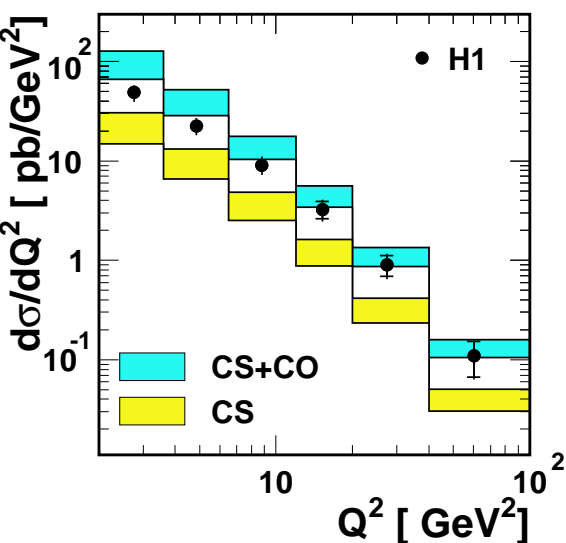
Photoproduction: Comparison with NRQCD (LO)



- LO NRQCD calculation resumming soft contributions at high z (M.Beneke, G.A. Schuler and S. Wolf)
- Λ : Energy loss of J/ψ due to soft gluon radiation

\Rightarrow resummation reduces discrepancy at high z

Electroproduction: Q^2 and $p_{t,\psi}^*$ Dependence

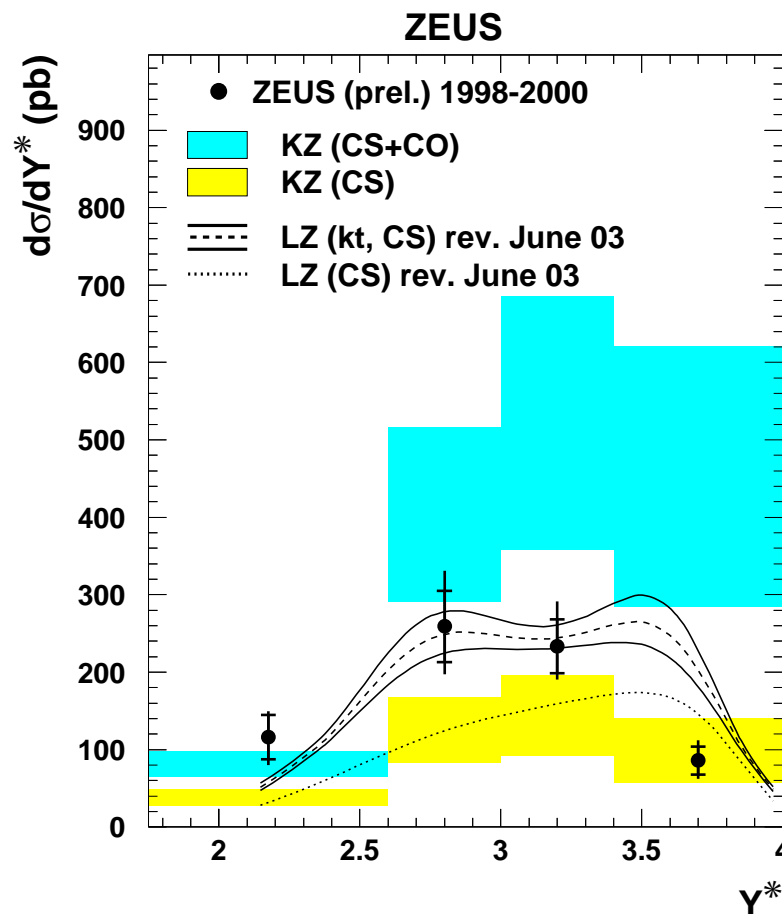
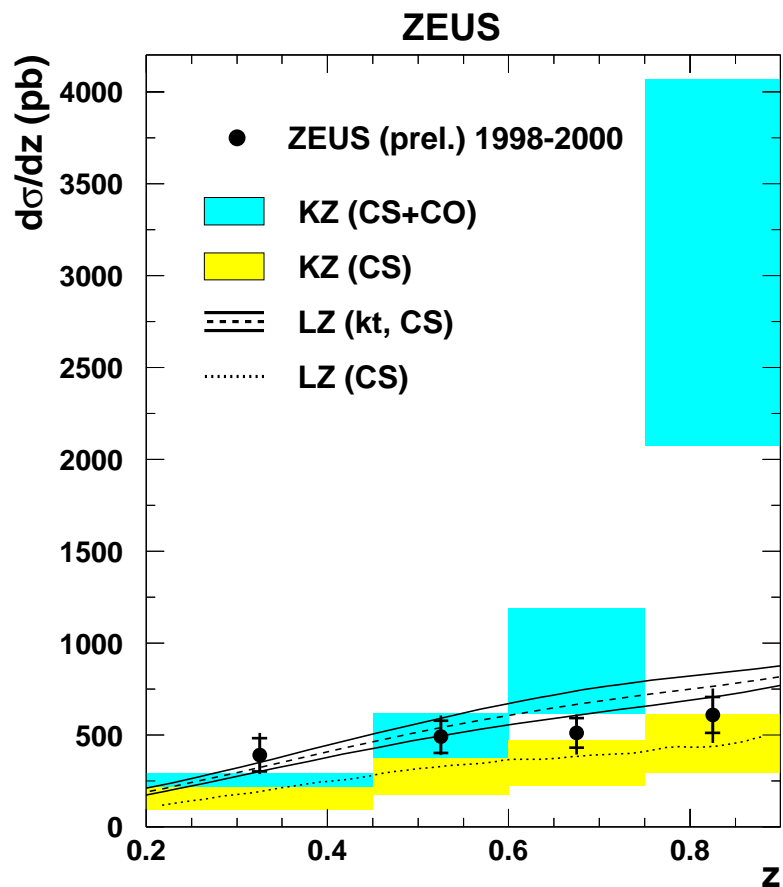


♣ comparison with LO NRQCD calculation and CS contribution (B.A. Kniehl and L.Zwirner)

♣ CS contribution too low by a factor ~ 2.7
 CS too steep in $p_{t,\psi}^{*2}$
 \Rightarrow missing higher orders?

♣ CS+CO too high at low $Q^2, p_{t,\psi}^{*2}$ (factor ~ 2)
 CS+CO description improves at high $Q^2, p_{t,\psi}^{*2}$ (smaller theoretical errors)

Electroproduction: z and rapidity Dependence



◇ z : missing resummation of soft terms for CS+CO

◇ CS below the data but shape consistent with the data
 CS+CO above the data

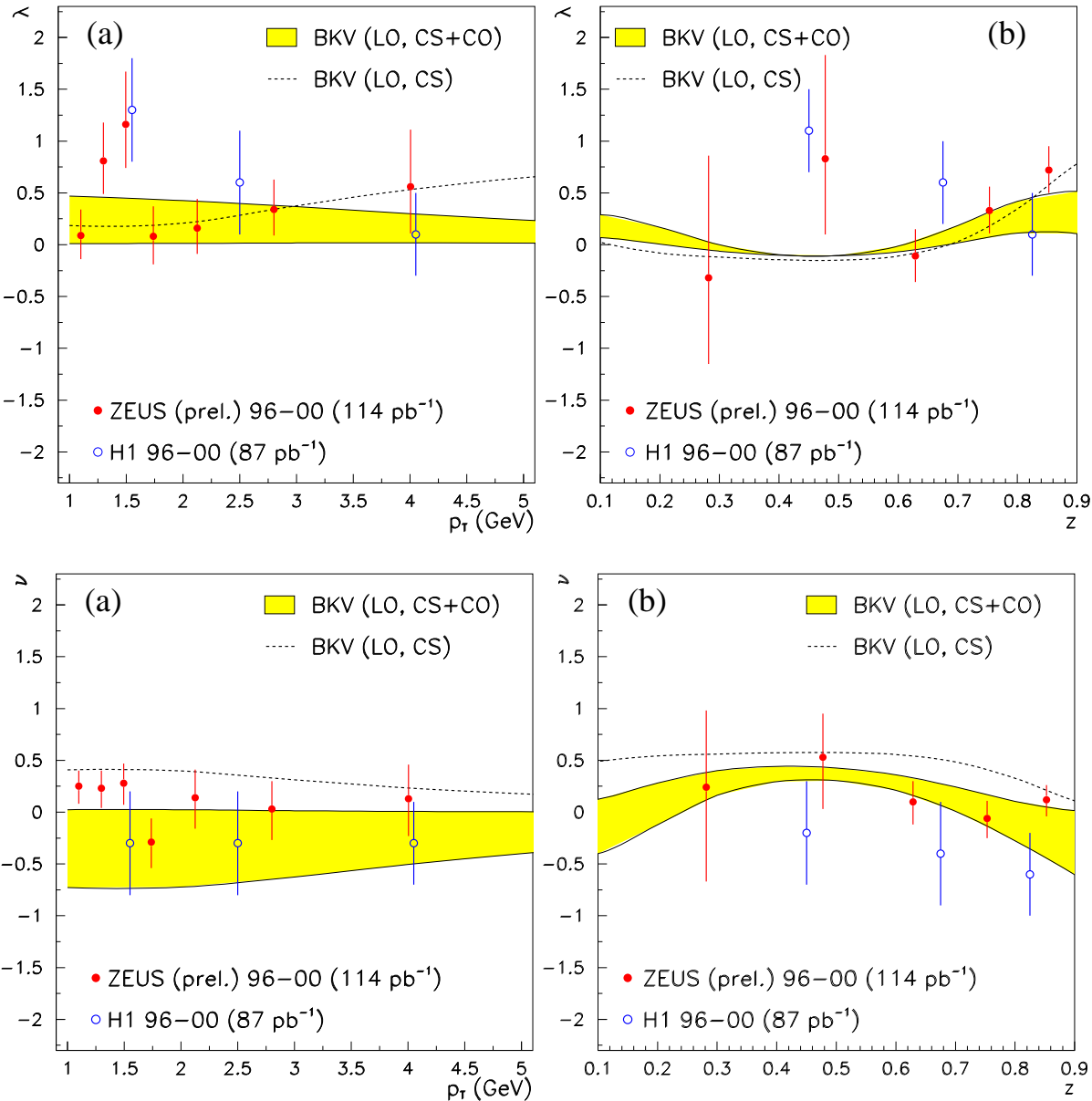
Polarization Measurements

- **Polarization of J/ψ provides information on production process independent of normalization uncertainties**
- polarization is measured in decay angular distributions in J/ψ rest system
 - θ^* : angle μ^+ to z' axis, direction opposite to that of the proton
 - ϕ^* : angle μ^+ to plane determined by incoming photon and proton

$$\frac{1}{\sigma} \frac{d\sigma}{d \cos \theta^*} \propto 1 + \lambda \cos^2 \theta^* \quad \lambda(= \alpha) = +1 : \text{transverse polarization}$$

$$\frac{1}{\sigma} \frac{d\sigma}{d \phi^*} \propto 1 + \frac{\lambda}{3} + \frac{\nu}{3} \cos 2\phi^* \quad \lambda(= \alpha) = -1 : \text{longitudinal polarization}$$

Polarization Measurements: Photoproduction



♠ ν more promising variable in order to disentangle the problem

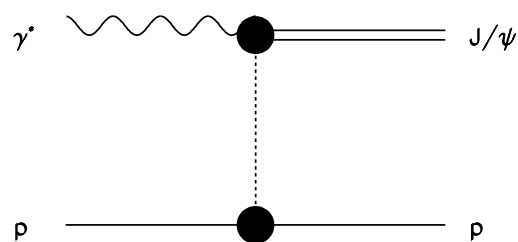
♠ \Rightarrow more data needed for decision on production mechanism

Conclusions and Outlook

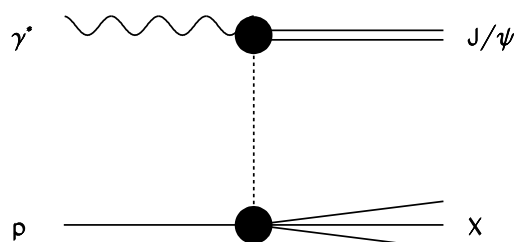
- **photoproduction:**
 - medium z : good agreement with CSM NLO calculations
 - low z : resolved photon contributions improve agreement
 - NRQCD with small LDMEs gives reasonable description
- **electroproduction:**
 - CS (LO) alone too low, wrong $p_{t,\psi}^{*2}$ dependence
 - NRQCD OK at high Q^2 and $p_{t,\psi}^{*2}$ but problems in z
- major improvement in data statistics needed for conclusions from polarization measurements \Rightarrow only possible with HERA II data
- \Rightarrow **NLO calculations in NRQCD (both for electro- and photoproduction) needed !**

Production Mechanisms – III (background)

- **diffraction** (subtracted in ZEUS data ($\approx 10\%$), not subtracted in H1 data ($< 2\%$))



elastic diffraction
 $z = 1$



proton dissociation
 $z \approx 1$

suppressed by cuts on:

- z ($z < 0.9$)
- $p_{t,\psi}^*$ ($\approx p_{t,\psi}$ in photoproduction)
- additional activity in the detector

- decay of **diffractively or inelastically produced ψ' mesons**: $\psi' \rightarrow J/\psi\pi\pi$; not subtracted in data!
- **decay of χ_c mesons**: $\chi_c \rightarrow J/\psi\gamma$ (low z); not subtracted in data!
- **decay of B mesons**: $B \rightarrow J/\psi X$ (low z , high $p_{t,\psi}$); not subtracted in data!